



# Pennsylvania Firebacks™

◆ ELEGANCE AND UTILITY / QUALITY THAT ENDURES ◆

## THE ART OF WARMING

In earlier times, the well appointed fireplace was never considered complete unless it included a cast iron fireback. Today, the fireback's usefulness and charms have been rediscovered, and are again at the center of hearth and home.

Positioned against the back wall of the hearth, a fireback protects the masonry of the wall and radiates the heat of the fire forward.

By reflecting light and heat from the fire out into the room, a fireback is a noticeable improvement to a hearth. This warmth is gained whether a fireback is used with wood fires or remote controlled gas log units.

A cast iron fireback is still the best way to protect a hearth's back wall from decay. Despite advances in technology, the harsh rays of fire render even modern refractory materials vulnerable to damage and the likelihood of expensive repairs. A

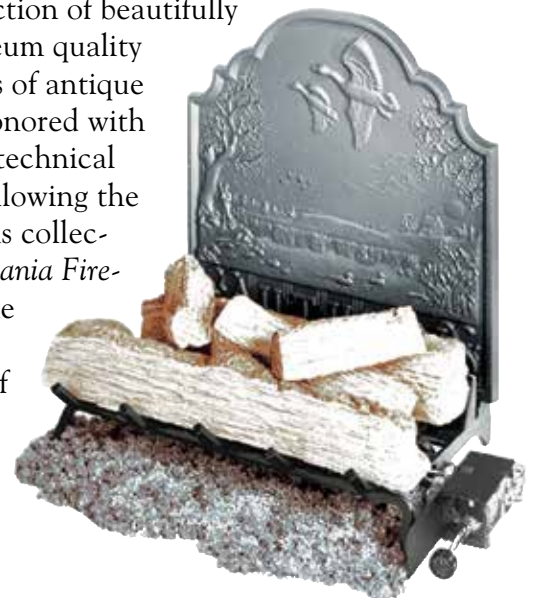
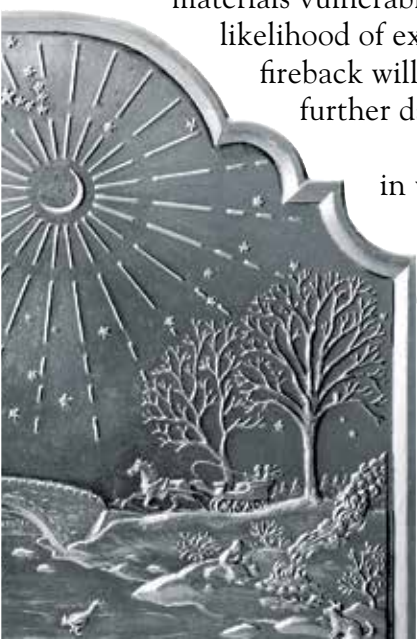
fireback will effectively prevent any further damage to the back wall.

As a sculptural accent in what is usually the natural focal point of a home, a fireback lends visual warmth and interest to a hearth whether it is with a roaring fire, or by soft candlelight.



In 1979, Pennsylvania Firebacks, revitalized this all but forgotten art form with the introduction of original firebacks made for contemporary fireplaces. Elegant design and castings of heirloom quality are the hallmarks of this unique collection.

Pennsylvania Firebacks is also proud to offer its collection of beautifully detailed museum quality reproductions of antique firebacks. Honored with an award for technical excellence following the premier of this collection, Pennsylvania Firebacks leads the way in bringing the best of the past into the future.



# Pennsylvania Firebacks™

## ORIGINAL DESIGNS

These original firebacks were created by artist J. Del Conner.



All Pennsylvania Firebacks come with a flat black water-based paint for protection in transit. We recommend stove polish be applied yearly for maintenance. Stove polish has been applied to some of the firebacks pictured.



**Night Horse**  
SF11 21½" w., 18" h., 48 lbs.

Under a crescent moon, a cantering horse is pictured by a water hole as it eclipses the stars of the constellation Pegasus. This fireback's curvaceous frame and rope molding lend it a distinctive originality.



**Autumn**  
SF09-A 21½" w., 21½" h., 60 lbs.

By the light of the harvest moon, a farmer pauses for reflection, as a flight of geese pass by. Filling out this romantic scene are ducks, a squirrel, a turtle, a red-winged blackbird and the awakening owl.



**Winter**  
SF09-W 21½" w., 21½" h., 58 lbs.

Romance under the rising stars of Orion, the hunter, with his dogs Sirius and Procyon confronting the retreating bull Taurus, while Lepus, the hare, is hiding just above the horizon.



**American Eagle**  
SF01 20½" w., 21½" h., 46 lbs.

A traditional American Eagle holding an olive branch, arrows and banner, with a sunburst of seven major and six minor rays piercing the clouds in a field of fifty stars.



**The Parthenon**  
ZF03 17½" w., 18" h., 35 lbs.

The integrity and beauty of this classic model has inspired centuries of western architects to incorporate it into their designs.



**Spring**  
SF09-S 21½" w., 21½" h., 55 lbs.

Nature's renewal is celebrated in this charming fireback. Children delight in the warmth of spring with ten birds, two rabbits, two deer and an advancing turtle.



**We the People**  
LE02 18" w., 21¾" h., 41 lbs.

Celebrating the U.S. Constitution, the artist is a descendant of Philip Syng Jr., silversmith who crafted the Independence Hall inkstand.



**Georgian Shell**  
SF04 19" w., 21½" h., 51 lbs.

During the Georgian Period (1714-1800), the unadorned cockle shell was a popular motif with Rhode Island furniture makers.



**Small American Eagle**

ZF02 20" w., 15 1/2" h., 31 lbs.

Designed for a smaller hearth, this fireback was created in 1982 to commemorate the two-hundredth anniversary of the American Bald Eagle's use on the Great Seal of the United States.



**Plain Panel**

SF06 19" w., 21 1/2" h., 59 lbs.

The Plain Panel Fireback displays a simple elegance indicative of the decorative arts created during the Georgian Period (1714-1800).



**Mountain View**

SF13 21 1/2" w., 21 1/2" h., 56 lbs.

A romantic view of distant mountains and a family of geese framed by intertwined arched trees sitting on a rocky hilltop.



**Franklin Sun**

SF02 18" w., 21 1/2" h., 44 lbs.

This fireback was the first design created for our initial production of original firebacks in 1979. "Alter Idem or Another the Same...warms when we please, and just as we desire."



**Pineapple**

SF05 19" w., 21 1/2" h., 51 lbs.

This Pineapple Fireback displays a simple elegance indicative of the decorative arts created during the Georgian Period (1714-1800). The pineapple, a symbol of hospitality, was especially popular with makers of decorative objects in this period.



**Dated Great Oak**

SF08-D 18" w., 20" h., 44 lbs.

Reintroducing the custom of marking the year with a dated fireback, the Great Oak has been available with the current date since 1980.



**Plain Great Oak**

SF08 18" w., 20" h., 42 lbs.

Symbol of strength, durability, and unity. The oak tree is the natural emblem and focal point of the hearth.



**Large Oak (not shown to scale)**

LF01 28" w., 26" h., 102 lbs.

This towering oak tree perched high on a mountain top is surrounded by nature at its finest with clouds, rocks, birds, deer and moon. The largest of the original designs, this substantial fireback will be the focal point of the hearth. On a pair of Saf-T-Boots, the Large Oak has a height of twenty eight and a half inches.



**Field of Leaves (horizontal)**

SF15 21 1/2" w., 18" h., 54 lbs.

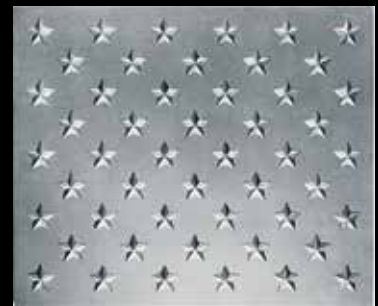
A swirling pattern of oak and beech leaves. A flexible contemporary design paying homage to the fuel of the fire.



**Field of Leaves (vertical)**

SF15 21 1/2" h., 36" w. (two 18" w., 54 lbs. each)

Use horizontal or vertical; use alone, or with others side by side to create a number of sizes. One of the firebacks pictured above has been turned one-hundred and eighty degrees enhancing the swirling pattern.



**18' Field of Stars (horizontal)**

SF18 21 1/2" w., 18" h., 40 lbs.

Field of fifty stars from the flag of the United States of America. The facets of this modern icon glimmer in the hearth. Use in a horizontal or vertical position; use alone or with others to create a number of sizes.



**Three Bears**

SF12 20" w., 18" h., 49 lbs.

Bears, butterflies and bees by a brook with box turtle, bird, berries and bark make this a back filled with detail. Mesmerizing in complexity, one can imagine this fireback telling a variety of stories during long dreamy fires of winter.



**Fleurs-De-Lis**

ZF04 17 1/2" w., 14 1/4" h., 24 lbs.

Used in heraldic art, some maintain that the fleurs-de-lis represents the lily, others the head of a lance. The pistils of these fleurs-de-lis clearly make this a fireback of flowers.



**Urn of Lilies**

SF03 17 5/8" w., 21 1/4" h., 37 lbs.

A classical urn of lilies on a pedestal with three bees. Bringing the warmth of spring to deepest winter, urns and flowers have long been a popular motif for fireback and stove plate ornamentation.



**The Bass**

SF10 19" w., 19 1/2" h., 46 lbs.

This fireback tells the story of a sunrise which inspires a turtle to climb on a log, to bask in the warmth, which puts two dragon flies to flight, causing the Bass to show itself to soaring eagles and an approaching fisherman.



**Small Oak**

ZF01 18" w., 16" h., 33 lbs.

Same motif as the Great Oak, but designed for today's prefab and smaller fireplaces. A homage to all that we receive from the tree, a symbol of strength and durability.



**Tall Oak**

SF20 21 1/2" w, 21 1/2" h., 61 lbs.

The Tall Oak was designed to complete the range of sizes offered in our line of oak-themed firebacks.



**Halley's Comet**

LE01 19" w., 21 1/2" h., 50 lbs.

Marking the night Halley's Comet crossed the celestial equator, New Year's Eve 1985. On that night, the comet entered the overflowing bowl of Aquarius the water bearer.



**North Star**

SF07 21 1/2" w., 19 1/2" h., 49 lbs.

The Man-in-the-Moon shows how Polaris or the North Star, in the handle of the Little Dipper, is found using the "pointer stars" in the bowl of the Big Dipper. The stationary North Star appears to rule the heavens.



**14" Field of Stars**

SF14 14" w., 21 1/2" h., 34 lbs.

Use in a horizontal or vertical position; use alone or with others side by side to create a number of sizes. The thin profile of the 14" Field of Stars makes it a perfect fit for a Rumford fireplace.



Pictured below is a fireplace with three 14" Field of Stars creating a fireback 42" wide.



**Large Plain Panel**

LF02 28" w., 24" h., ?? lbs.

Copy to come, copy to come copy to come copy to come copy to come copy to come copy to come copy to come copy to come

# Pennsylvania Firebacks™

## ANTIQUE REPRODUCTIONS



**Catoctin Furnace**  
AF04 22<sup>5</sup>/<sub>8</sub>" w., 21<sup>3</sup>/<sub>4</sub>" h., 59 lbs.

Located near present day Camp David, Catoctin Furnace was built in 1775-1776 by Thomas Johnson, the first governor of Maryland. Benjamin Blackford and Thomas Thornburgh were partners in this Maryland foundry from 1801 to 1812.



**Hereford Stove Plate**  
SP01 22<sup>3</sup>/<sub>4</sub>" w., 23" h., 64 lbs.

This side from a dismantled five plate stove was used for many years as a fireback. Pennsylvania's Hereford furnace was built in 1745 by Thomas Maybury. William Maybury managed this furnace from 1757 to 1764.



**Joseph Webb Stag**  
AF01 26" w., 28" h., 92 lbs.

This fireback's prominently arched top and highly detailed border are features which distinguish it from more traditional American fireback frames. A trade card engraved by Paul Revere for Webb's store located it as being "near Oliver's Dock."



**Pine Grove Furnace**  
AF02 21" w., 25<sup>3</sup>/<sub>4</sub>" h., 61 lbs.

The classical urn and flower motif were popular ornamentations for firebacks in late eighteenth century America. The addition of the bird in the foliage was less common. This was cast in south central Pennsylvania at Pine Grove furnace in the early 1770's.



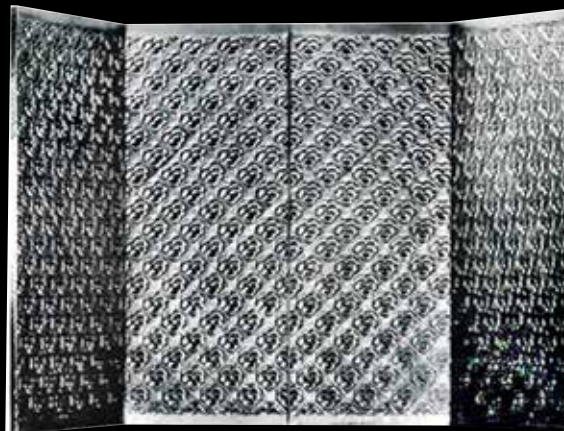
**Aetna Rooster**  
AF05 22" w., 26" h., 59 lbs.

Popular as a decorative element in the late eighteenth century, the rooster had long been a symbol of victory. This was cast no later than 1775 at the first of two Aetna foundries located in southern New Jersey near present day Medford Lakes.



**Floral Panel Side**  
FP01-S 14<sup>5</sup>/<sub>8</sub>" w., 29<sup>1</sup>/<sub>2</sub>" h., 49 lbs.

Use vertical or horizontal. The thin profile of The Floral Panel Side makes it a perfect for a Rumford fireplace.



**Floral Panel Surround**  
FP01-C Center: 24<sup>3</sup>/<sub>4</sub>" w., 29<sup>1</sup>/<sub>2</sub>" h., 83 lbs.  
Sides: 14<sup>5</sup>/<sub>8</sub>" w., 29<sup>1</sup>/<sub>2</sub>" h., 49 lbs. each

A Victorian era three-sided fireback surround sits on the hearth floor at a ninety degree angle. The angle of the hinged side-plates can be adjusted to fit a variety of widths.



**Eagle and Shield**  
AF03 17" w., 24<sup>3</sup>/<sub>4</sub>" h., 65 lbs.

With the adoption of the Great Seal of the United States in 1782, the American bald eagle was applied to numerous household items. Probably cast in England between 1780 and 1810.

# SAF-T-BOOT FIREBACK SUPPORT SYSTEM

## Saf-T-Boots

SB3 1½" - 2" - 2½" - 3" steps  
8¼" deep, 11 lbs.



A Pennsylvania Fireback can easily and safely be installed in a hearth by using a pair of Saf-T-Boot fireback supports.

The Saf-T-Boot's unique step design enables a fireback to be held leaning slightly back, upright, or leaning forward at a number of angles against the back wall of the hearth.

Saf-T-Boots and your fireback can be used with any cast iron grate, wrought iron grate, andirons, or gas log system.

Pictured to the right is a Three Bears Fireback leaning forward on a pair of Saf-T-Boots. Pictured below from left to right, the fireback is positioned leaning slightly back, straight up, and leaning forward.



**FIREBACK CARE:** We recommend you apply stove polish or black directly to the entire face and sides of the fireback. When dry, in about twenty minutes wipe it with an old rag, or burnish with a wire brush to give the fireback a long-lasting bright finish that will also protect the casting from rust. The polish can be brightened again by burnishing it in place after use. Depending on how much the fireback

is used, apply another coat of polish once a year at the beginning of the season. The graphite of the polish, like that of a soft pencil rubbing, can be spread around to the burnout area until a new coat of polish is applied.

***Do not use a Pennsylvania Fireback with a fire fueled by coal.***

***Do not use a Pennsylvania Fireback with a wall of fire type grate.***